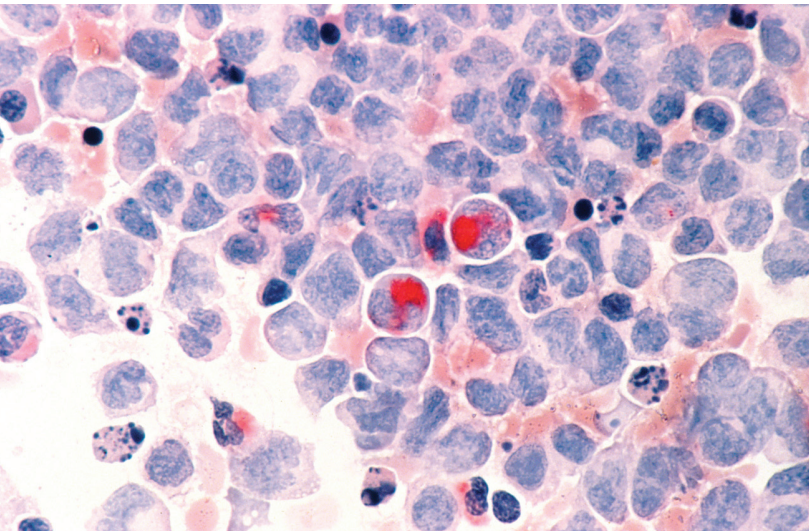


EPIDEMIOLOGY



This highly-ranked MPH program prepares future leaders in epidemiology to analyze public health trends, design and implement studies, and interpret results for policy and program development. Beyond investigations into the determinants of health and disease, epidemiologists translate medical and laboratory data into population trends to identify changes in the public health burden of disease.

Our unique program infrastructure combines Epidemiology, Public Health Nutrition, Maternal & Child Health, and Community Health in one department, giving students access to faculty across disciplines.

CURRICULUM & PROGRAM FORMAT

STANDARD PROGRAM, 48 CREDITS

In the standard program, students complete 48 credits, including 38 credits of required coursework and 10 credits of electives. Students tailor the program to their individual needs and interests through electives in epidemiology or other health-related graduate-level courses. These courses enable students to develop a specialty emphasis in either specific public health topics or methodological areas.

ACCELERATED PROGRAM, 42 CREDITS

The accelerated program is available for students who have completed an MD, DDS, DVM, or PhD in a related field. This program includes 34 credits of required coursework and 8 credits of electives.

ADVANTAGES OF THE PROGRAM

Connections. A long and close partnership with the Minnesota Department of Health—one of the best health departments in the country—provides field experiences, professional mentorship, and career opportunities.

Integrated health sciences. The University of Minnesota's innovative infrastructure of six health sciences schools—one of three such models in the country—gives our students the ability to learn from and work with a diverse array of health experts.

Supportive environment. Students receive personal attention from world renowned epidemiology faculty, and a network of more than 10,000 alumni who are dedicated to student success.

Comprehensive curriculum. Grounded in current approaches to biologic and behavioral epidemiology, students are well-prepared with the skills needed for a successful career.

High ranking. A degree from a top 10 school of public health provides distinction in competitive career environments.

WHO SHOULD APPLY?

The Epidemiology MPH program admits applicants with a variety of backgrounds, including biology, law, mathematics, microbiology, genetics, medicine, and social and behavioral sciences. Preference is given to applicants with good quantitative and analytic abilities and a solid foundation in a life science. Admitted students must be comfortable learning statistical methods to address problems in human health and disease.

CAREER

The current national job market for epidemiology graduates is extremely strong, and spans a variety of fields and positions. Graduates are well-prepared to work in private companies and NGOs, national and international organizations, and state and local departments of health on surveillance and disease control programs, data management, and research and development. This is also an appropriate foundation for students who want to pursue advanced degrees such as PhD, MD, DDS or DVM degrees. Many graduates go on to national and international research careers in academia and research organizations.

POSITIONS HELD BY GRADUATES OF THE EPIDEMIOLOGY PROGRAM

UCare Minnesota
Healthcare Analyst

Minneapolis Medical Research Foundation, Inc.
Research Coordinator

United HealthCare Services, Inc.
Healthcare Economics Analyst

Minnesota Department of Health
Disease Intervention Specialist

Centers for Disease Control (CDC)
Analyst

Regulatory and Clinical Research Institute, Minnesota
Epidemiologist

ADMISSIONS

REQUIRED

- Official transcripts
- Resume or curriculum vitae (CV)
- GRE scores
- 3 letters of recommendation
- Statement of purpose and objectives

PREFERRED

Relevant experience in a public health setting as well as the ability to convey an understanding of the epidemiology field.

APPLICATION DEADLINE

Scholarship priority deadline: **December 1**
Final deadline: **May 1**

AFFILIATED RESEARCH CENTERS

- Center for Global Health and Social Responsibility
- Masonic Cancer Center
- Center to Study Human-Animal Relationships and Environments (CENSHARE)
- Minnesota Population Center
- Upper Midwest Agricultural Safety and Health Center
- Center for Leadership Education in Maternal & Child Public Health
- Center on Aging
- Epidemiology Clinical Research Center (ECRC)
- Obesity Prevention Center

DUAL-DEGREE OPTIONS

MPH/MD, U of M Medical School
MPH/JD, U of M Law School

EXPERT FACULTY

Epidemiology students engage with faculty (one profiled below) who are deeply involved in current practice and research.



Benjamin Capistrant's research focuses on social determinants of aging and non-communicable diseases, both in the U.S., and in low and middle income countries. In particular, he is interested in how social factors like family dynamics, race/ethnicity, and education are associated with health outcomes like disability, cognitive function, and cardiovascular disease.

© 2016 The University of Minnesota is an equal opportunity educator and employer. Printed on recycled and recyclable paper with at least 10 percent postconsumer waste material. This material is available in alternative formats upon request: 612-626-8802.

FOR MORE INFORMATION:

Kathryn Schwartz-Eckhardt

Senior Enrollment and Program Development Manager

Email: schwa139@umn.edu

Phone: 612-626-8802



SCHOOL OF
PUBLIC HEALTH

UNIVERSITY OF MINNESOTA