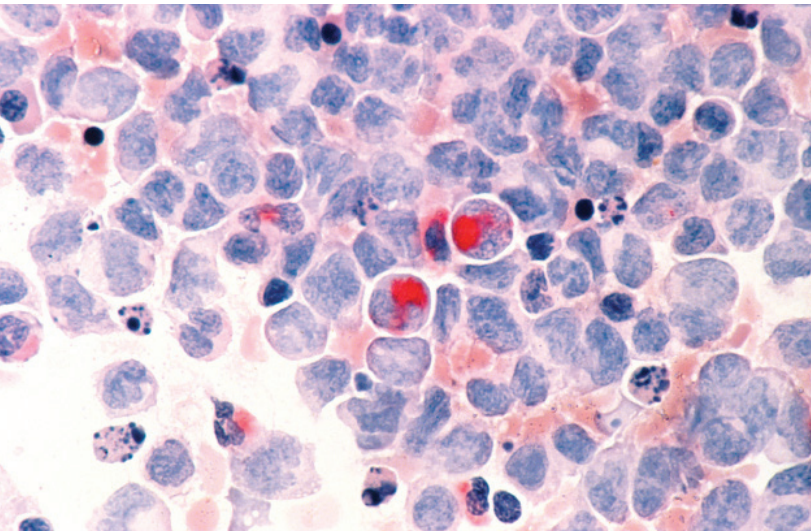


# EPIDEMIOLOGY



This highly-ranked MPH program prepares future leaders in epidemiology to analyze public health trends, design and implement studies, and interpret and translate key data to policy makers, community leaders, health providers, and others. Beyond investigations into the determinants of health and disease, epidemiologists translate medical and laboratory data into population trends to identify changes in the public health burden of disease.

**Our unique program infrastructure combines Epidemiology, Public Health Nutrition, Maternal & Child Health, and Community Health in one department, giving students access to faculty across disciplines.**

## PROGRAM OVERVIEW

### STANDARD PROGRAM

In the standard program, students complete 48 credits, including 37 to 38 credits of required coursework and 9 to 10 credits of electives. Students tailor the program to their individual needs and interests through electives in epidemiology or other health-related graduate-level courses. These courses enable students to develop a specialty emphasis in either specific public health topics or methodological areas.

### INFECTIOUS DISEASE EPIDEMIOLOGY TRACK

This track requires 48 credits and is designed for students interested in a career in infectious disease epidemiology.

### ACCELERATED PROGRAM

The accelerated program is available for students who have completed an MD, DDS, DVM, or PhD in a related field. This program includes 34 credits of required coursework and 7 to 8 credits of electives.

## ADVANTAGES OF THE PROGRAM

**Connections.** A long and close partnership with the Minnesota Department of Health—one of the best health departments in the country—provides field experiences, professional mentorship, and career opportunities.

**Integrated health sciences.** The University of Minnesota's innovative infrastructure of six health sciences schools—one of three such models in the country—gives our students the ability to learn from and work with a diverse array of health experts.

**Supportive environment.** Students receive personal attention from world-renowned epidemiology faculty, and a network of more than 10,000 alumni who are dedicated to student success.

**Comprehensive curriculum.** Grounded in current approaches to biologic and behavioral epidemiology, students are well-prepared with the skills needed for a successful career.

## WHO SHOULD APPLY?

Epidemiology MPH students come from a variety of backgrounds, including biology, law, mathematics, microbiology, genetics, medicine, and social and behavioral sciences. Preference is given to applicants with strong quantitative and analytic abilities. Admitted students must be comfortable learning statistical methods to address problems in human health and disease.

## CAREER

The current national job market for epidemiology graduates is extremely strong, and spans a variety of fields and positions. Graduates are well-prepared to work in private companies and NGOs, national and international organizations, and state and local departments of health on surveillance and disease control programs, data management, and research and development. This is also a great foundation for students who want to pursue advanced degrees such as PhD, MD, DDS or DVM degrees. Many graduates go on to national and international research careers in academia and beyond.

## POSITIONS HELD BY GRADUATES

**UCare Minnesota**  
Healthcare Analyst

**Minneapolis Medical Research Foundation, Inc.**  
Research Coordinator

**United HealthCare Services, Inc.**  
Healthcare Economics Analyst

**Minnesota Department of Health**  
Disease Intervention Specialist

**Centers for Disease Control (CDC)**  
Analyst

**Regulatory and Clinical Research Institute, Minnesota**  
Epidemiologist

## ADMISSIONS

### APPLICATION REQUIREMENTS

- Official transcripts
- Resume or curriculum vitae (CV)
- 3 letters of recommendation
- Statement of purpose and objectives

### RECOMMENDATIONS

- Relevant experience in a public health or related setting

## AFFILIATED RESEARCH CENTERS

- Center for Global Health and Social Responsibility
- Masonic Cancer Center
- Center to Study Human-Animal Relationships and Environments (CENSHARE)
- Minnesota Population Center
- Upper Midwest Agricultural Safety and Health Center
- Center for Leadership Education in Maternal & Child Public Health
- Center on Aging
- Epidemiology Clinical Research Center (ECRC)
- Obesity Prevention Center

## DUAL-DEGREE OPTION

**MPH/JD**, U of M Law School

## EXPERT FACULTY

Epidemiology students engage with faculty (one profiled below) who are deeply involved in current practice and research.



Assistant Professor **Kumi Smith** researches infectious disease epidemiology, clinic-based interventions, and patient-provider relations. She investigates ways to better adapt cutting-edge prevention tools—particularly for HIV and STD control—for use in resource-constrained settings. Most of her research to date is based in China.

### FOR MORE INFORMATION:

**Student and Academic Support Services**  
Division of Epidemiology & Community Health  
Email: [epichstu@umn.edu](mailto:epichstu@umn.edu)  
Phone: 612-626-8802

### SPH.UMN.EDU

© 2023 The University of Minnesota is an equal opportunity educator and employer. Printed on recycled and recyclable paper with at least 10 percent postconsumer waste material. This material is available in alternative formats upon request: 612-626-8802



SCHOOL OF  
**PUBLIC HEALTH**  
UNIVERSITY OF MINNESOTA